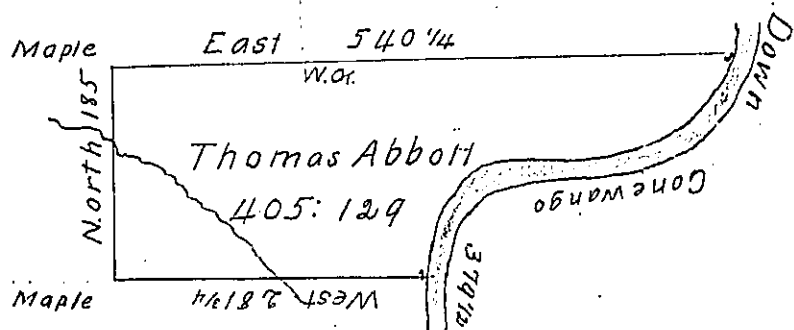


P^g-9
Edw^d Abbott



Courses on the River

S. 20° E 34	S. 19° W. 42 1/2
S. 20° W. 54	S. 71° W. 64
S. 65° W. 81	S. 86° W. 104
S. 6° W. 104	S. 65° W. 81
S. 71° W. 64	S. 20° W. 54
S. 19° W. 42 1/2	S. 20° E 34
	379 1/2

John Abbott
P^g-11

Surveyed on the 2nd day of July 1795 the above described Tract of Land in District No 6, in pursuance of a Warrant to Thomas Abbott, dated 20th December 1793 containing Four Hundred, five Acres and 129 Perches and allowance of Six per Cent

To Daniel Brodhead Esq^r
Surveyor General

Sam^l Nicholson
D.S.

IN TESTIMONY that the above is a copy of the original remaining on file in the Department of Internal Affairs of Pennsylvania, made conformably to an Act of Assembly approved the 16th day of February, 1833, I have hereunto set my Hand and caused the Seal of said Department to be affixed at Harrisburg, this Twenty fourth day of August 1903

Isaac R. Brown
Secretary of Internal Affairs.